



TSX.V: ANE

INVESTOR PRESENTATION

Diggers & Dealers

August 2019

WWW.ALTNEV.COM

Forward looking statement

This presentation has been prepared by Altan Nevada Minerals Limited (“Altan Nevada”) to provide an overview of Altan Nevada’s mineral properties and current exploration activities. Any statements, opinions, projections, forecasts or other material contained in this presentation do not constitute a commitment, representation or warranty by Altan Nevada or its directors, officers, agents or employees. The directors, officers, agents and employees of Altan Nevada shall in no way be liable to any person or body for any loss, claim, demand, damages, costs or expenses of whatsoever nature arising in any way out of, or in connection with, the information contained in this presentation. This presentation does not constitute an offer to sell securities and is not a solicitation of an offer to buy securities. It is not to be distributed to third parties without the consent of Altan Nevada. An investment in Altan Nevada is considered to be speculative in nature. Each individual should rely solely upon its own investigations and inquiries with respect to Altan Nevada and agrees it will not in any way rely upon this presentation. Altan Nevada recommends that you consult your own professional advisor(s).

Certain statements in this presentation may constitute “forward-looking” statements that involve known and unknown risks, uncertainties and other factors that may cause Altan Nevada’s actual results, performance or achievements or industry results to be materially different from any future results, performance or achievements expressed or implied by such forward looking statements. These statements relate to future events or future performance and reflect the expectations of management regarding growth, results of operations, performance and business prospects and opportunities. Forward-looking statements involve significant risks and uncertainties, should not be read as guarantees of future performance or results, and will not necessarily be accurate indicators of whether or not such results will be achieved. Forward-looking statements are based on the beliefs, estimates and opinions of Altan Nevada’s management on the date the statements are made. Altan Nevada undertakes no obligation to update these forward-looking statements in the event that management’s beliefs, estimates or opinions, or other factors, should change.

All technical and scientific information contained in this presentation has been reviewed and approved by Barry Bourne, a “Qualified Person” as such term is defined in NI 43-101 of the Canadian Securities Administrators. Mr. Bourne is an independent consultant retained by the company”



Construction – Pumpkin Hollow May 2019 from Venus Drill Target VPC1

Company Overview Share Structure

Altan Nevada Minerals

Shares on Issue
Options On Issue
Share Price
Market Capitalisation
Cash in bank.

TSXV - ANE

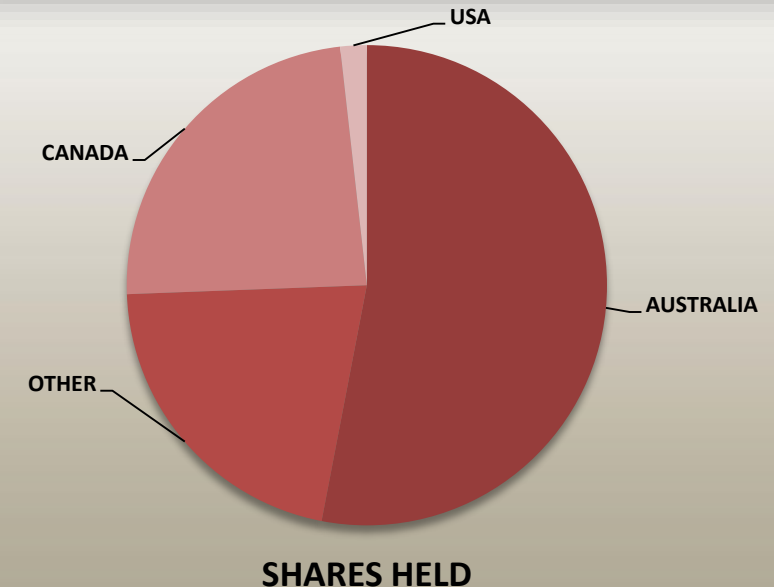
62M
NIL
\$0.06
\$3.4M
\$1.0M

Board & Management

John L.C. Jones AM
Paul Stephen
Barry Bourne
Murray Seitz
Peter Stern
Evan Jones

Chairman
CEO
Technical Director
Director
Director
Director

Share Price – 12 Months



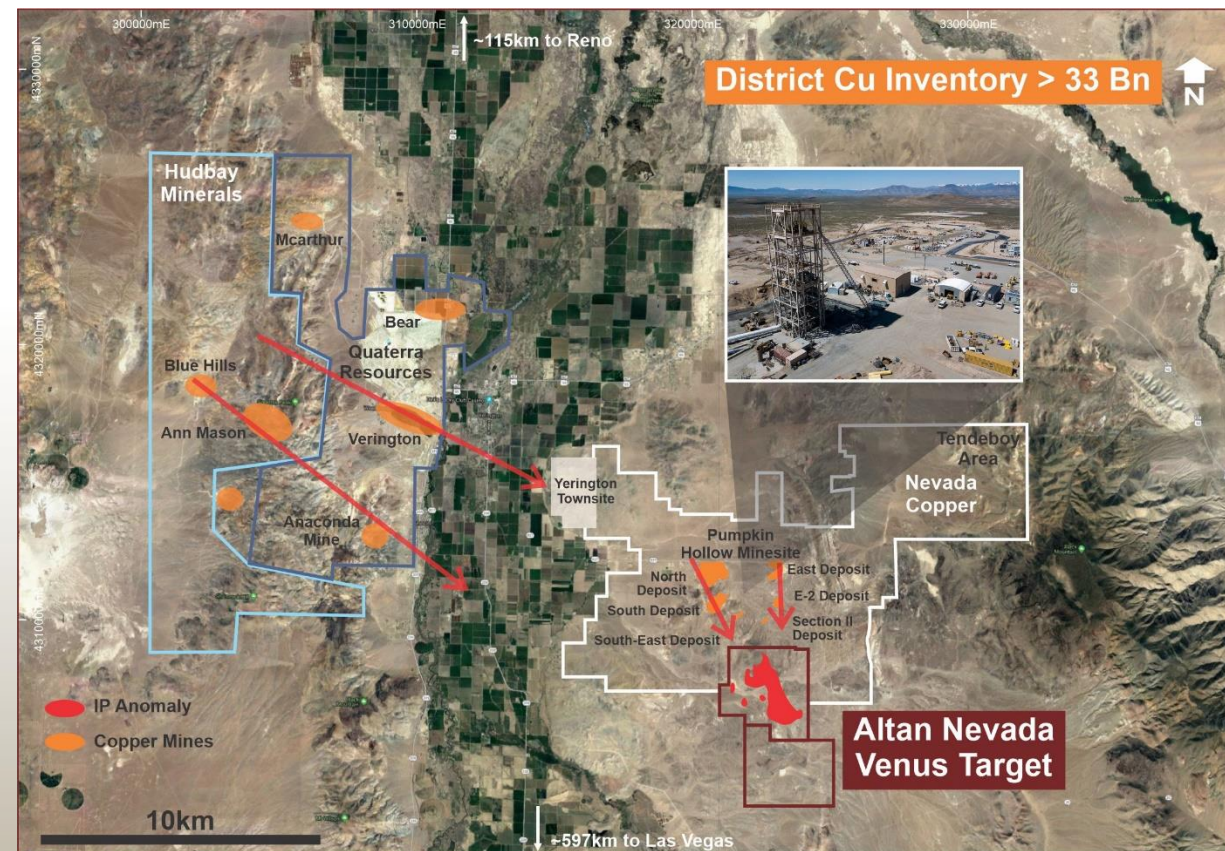
Major Mine Development on Tenement Boundary

- The Pumpkin Hollow Copper-Gold Mine complex is fully permitted encompassing both underground and open cut mines
- **Altan Nevada holds the immediately adjacent tenement along trend and less than 1 Mile from the mine and processing plant.**
- Owned by Nevada Copper Corp. (TSX:NCU) the mine is forecast to produce an average 50 million pounds of copper annually over 23 years commencing mid-2019
- The only major fully-permitted copper project of scale in the United States
- Current reserves 23.9mt @ 1.74% Cu eq (2.01% eq over first 5 yrs.)

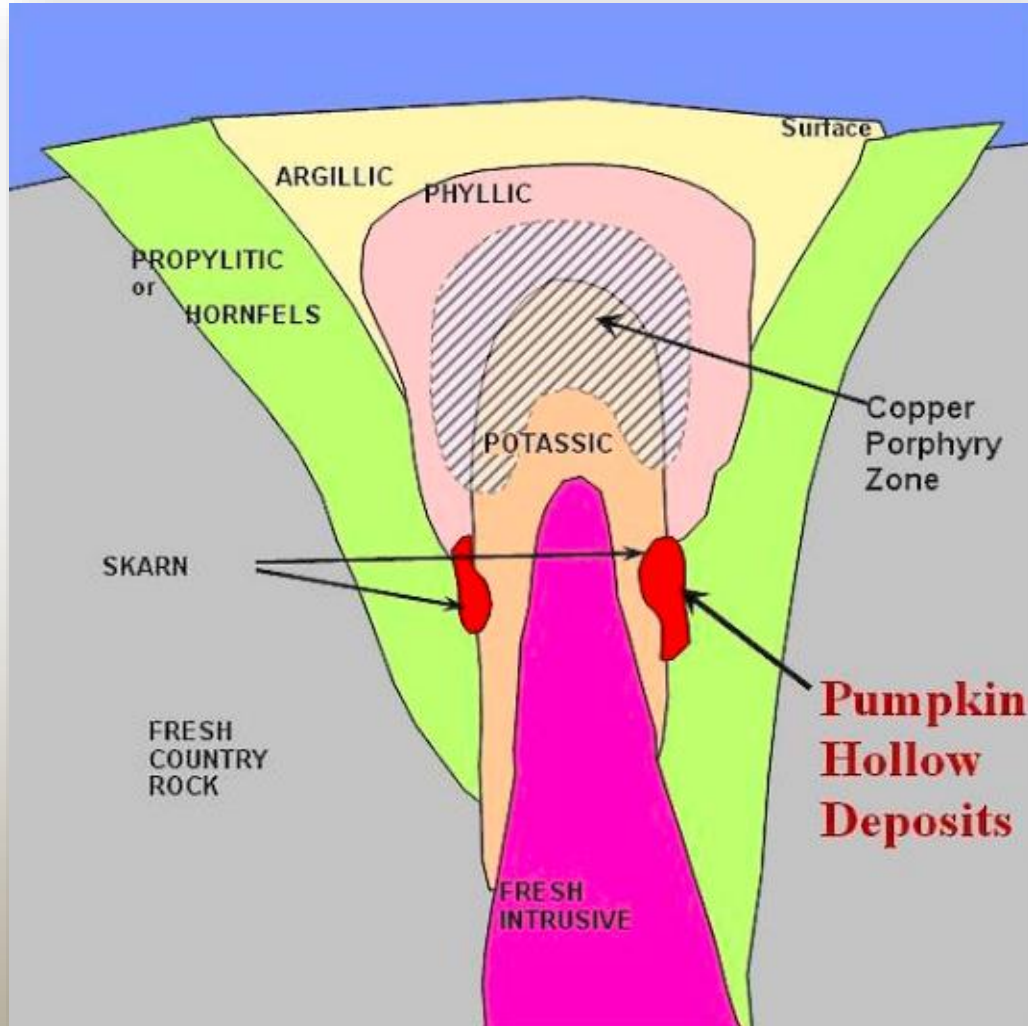


Yerington Copper Porphyry District

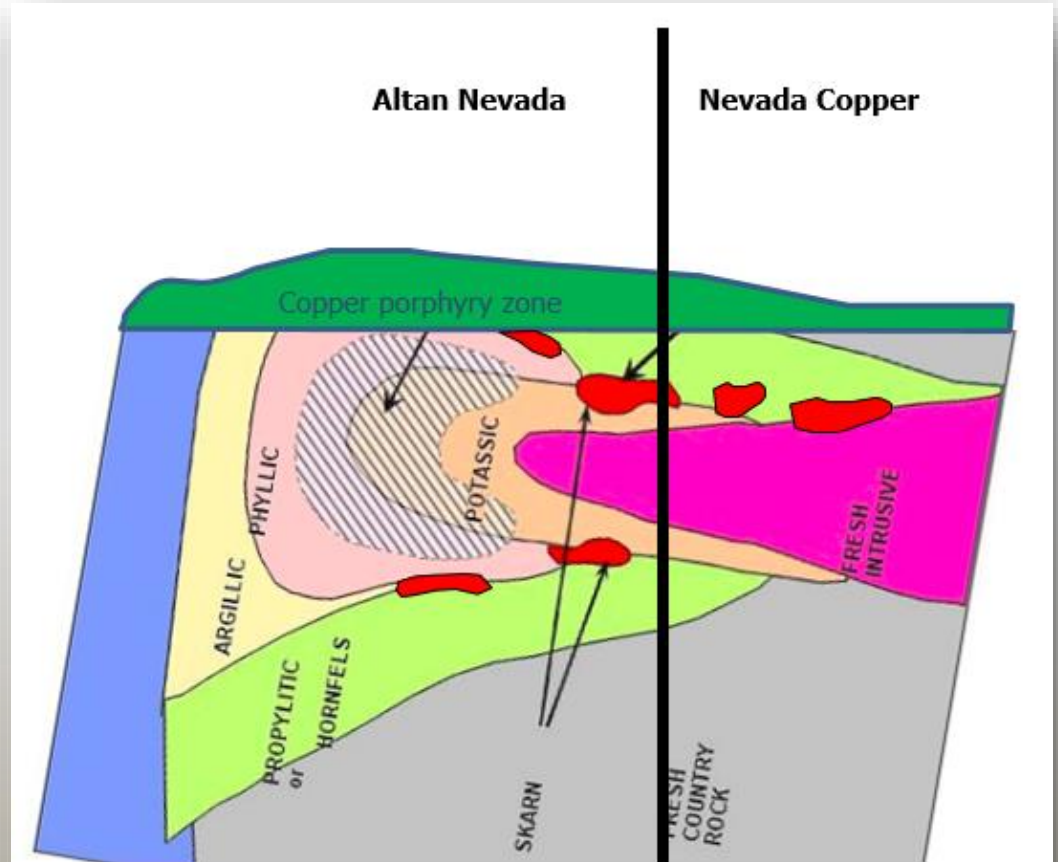
- Hosts the Pumpkin Hollow Copper Gold mine as well as the historical Anaconda copper mine (1918-1978).
- Venus project is approximately six miles east-south-east of the Yerington township.
- Porphyries tend to cluster and the Pumpkin Hollow deposits form a SE strike directly into the Venus Target.
- Four Public companies currently operating around Yerington: Nevada Copper Corp (\$300M); Hudbay Minerals (\$1.2B); Quaterra Resources (\$16M) and **Altan Nevada Minerals (\$3M)**
- Venus is considered to have good potential for the discovery of new deposits of similar size and grade to Pumpkin Hollow.
- Venus also has the potential for discovery of buried porphyry-style copper mineralization with characteristics similar to the Yerington Mine.



Pumpkin Hollow Copper Mineralization Porphyry



Mineralisation styles – Iron Oxide copper gold mineralisation adjacent to copper porphyry style mineralisation

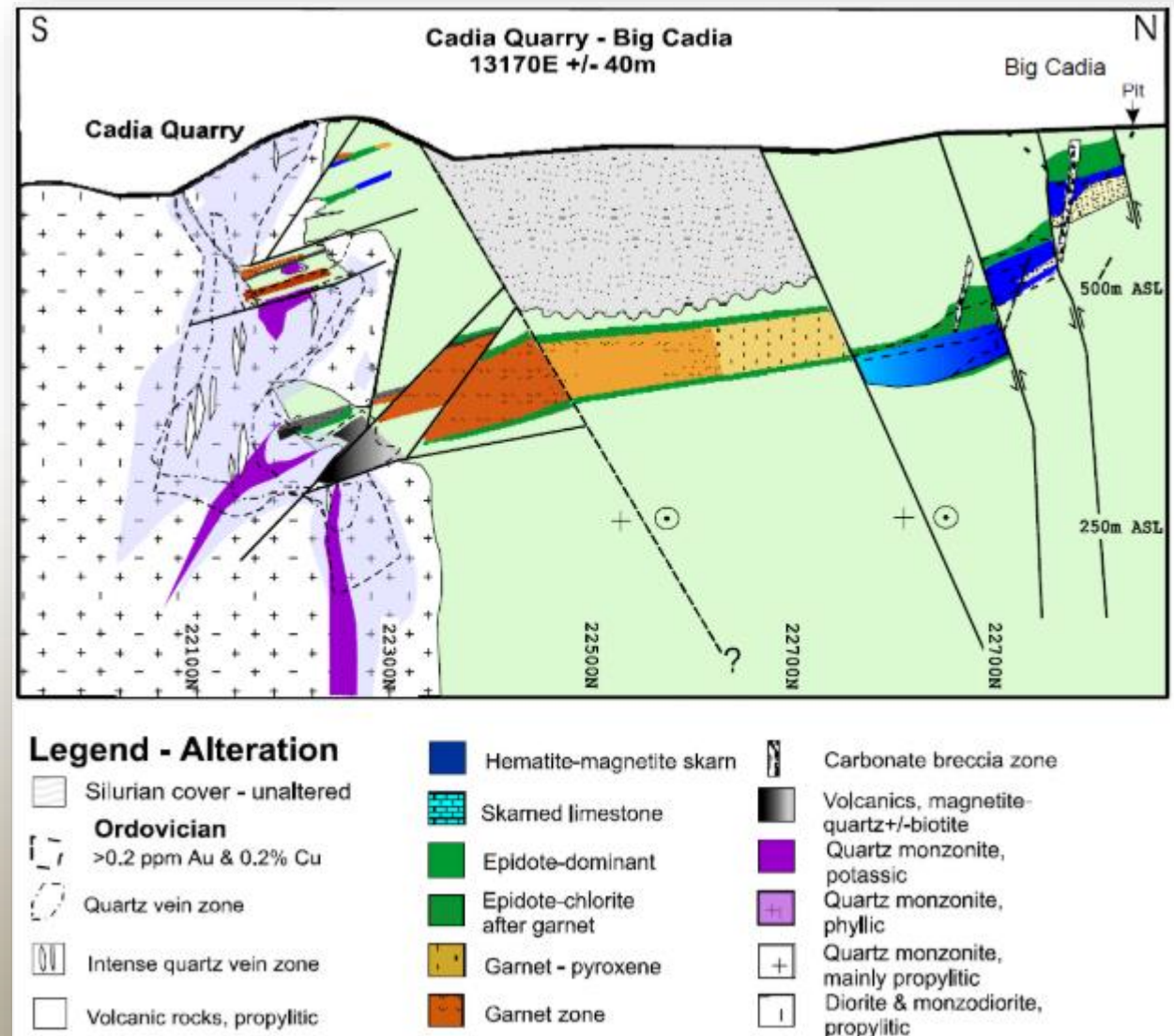


Mineralisation styles – Iron Oxide copper gold mineralisation adjacent to copper porphyry style mineralisation

Porphyry is lent over horizontally

Cadia Porphyry Mineralisation & Post Mineral Faulting

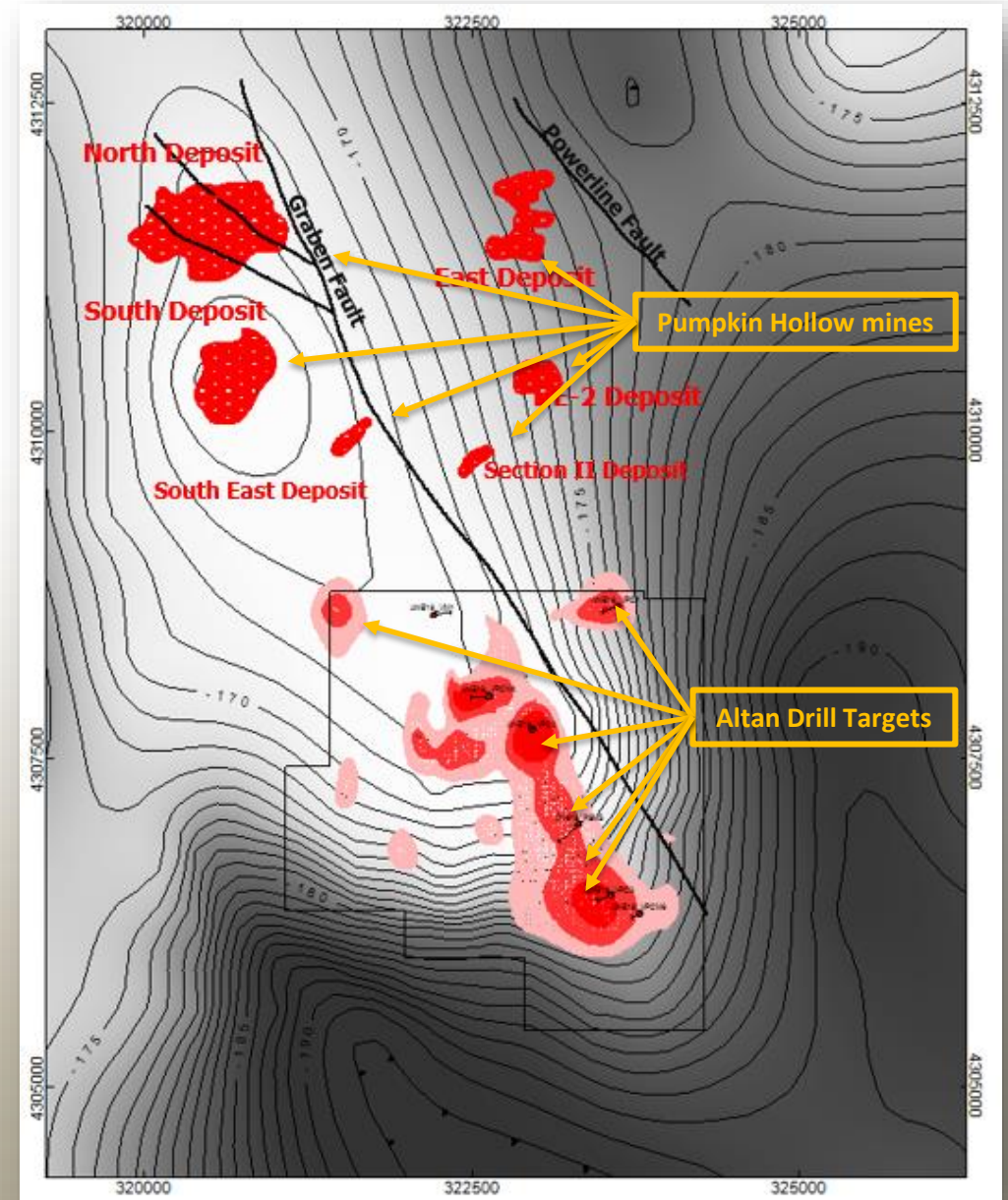
- Newcrest Mining's Cadia operations in NSW is one of Australia's largest gold mines located 250km west of Sydney.
- In the financial year ending 30 June 2018, CVO produced 599,717 ounces of gold and 61,764 tonnes of copper.
- Over 9 million ounces of gold has been produced from CVO since commercial production commenced in 1999.



Mineralisation styles – Cadia Quarry and Big Cadia Skarn fluid pathways between them

Venus Project – Gravity Survey – Confirms targets

- Evidence at surface of anomalous copper, silver and gold leakage along structures suggests that geological targets exist similar to the known mineralization at Pumpkin Hollow.
- A dyke with copper (0.86%) and gold (6.04 g/t), supports potential for the occurrence of high grade copper-precious metals veins
- Approximately 2500m of drilling has been proposed. Targets range in depth from 100m to 250m below surface. The 2018 3DIP/ resistivity survey has successfully mapped down to 500m.
- Scope for a significant blind deposit on the Venus tenement. Porphyries tend to cluster and the Pumpkin Hollow deposits form a SE strike into the Venus tenement.



3D IP chargeability zones shown in red with proposed drill targets over gravity data

New Tenements Acquired – August 2019

- 97 claims covering 2004 acres acquired prior to drilling
- Immediately adjacent and along trend from the Venus Drill Targets
- Regional airborne and geological data highlights prospectively
- Historic workings indicate surface mineralisation within the new claim area.
- Soil Sampling program completed and submission of assays pending

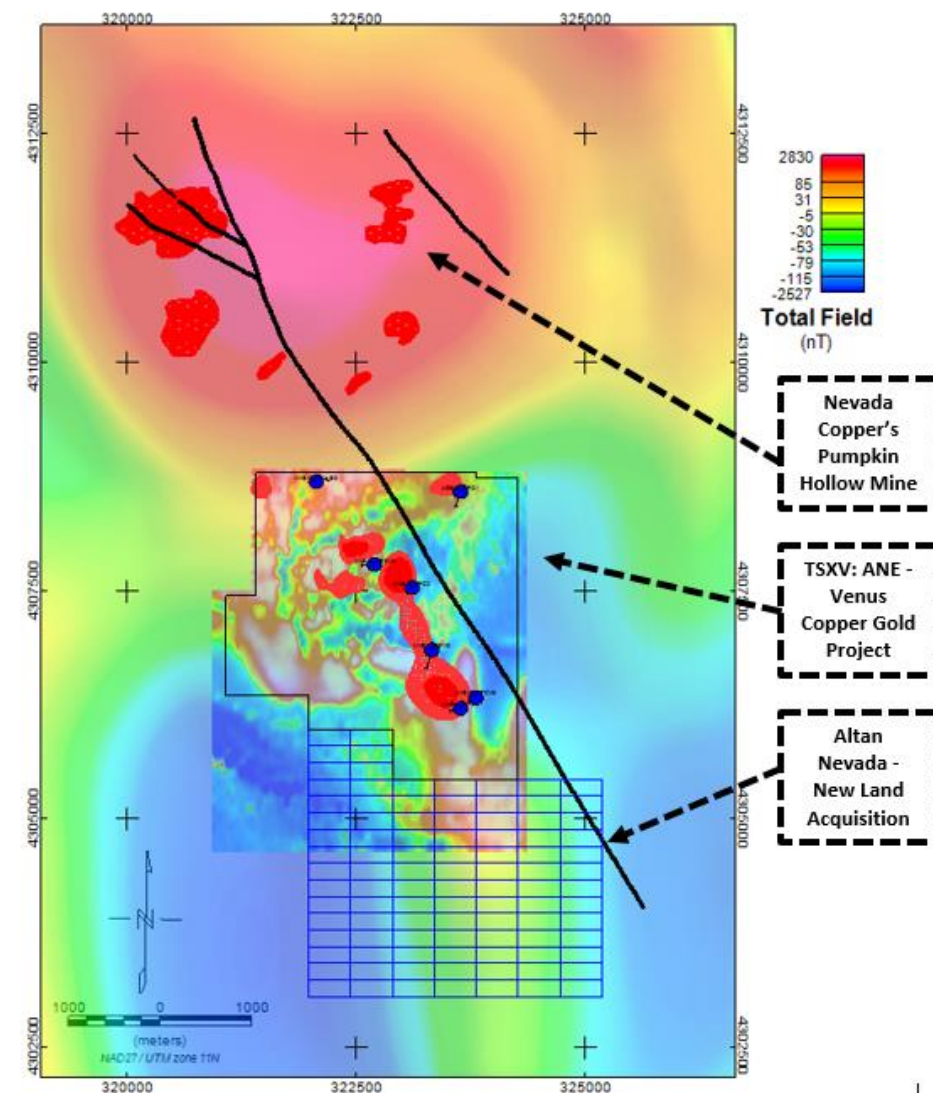
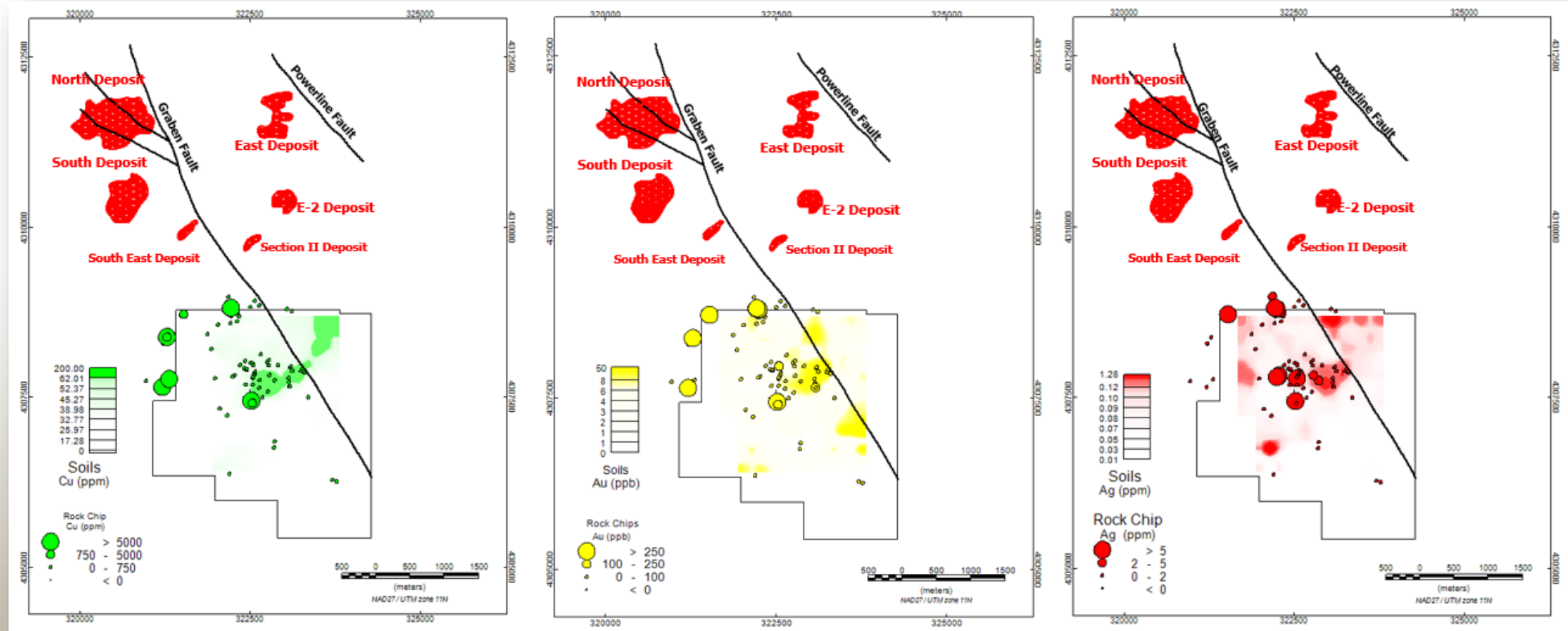


Figure 1 – Altan Nevada new Venus South claims shown in blue and existing claims in black. Results of government regional airborne magnetic data shown as colour image. Also shown are Nevada Copper's deposit locations (red) with mapped structures in black and Altan Nevada's proposed drilling locations (blue dots) with IP targets in pink/red.

Venus - Surface Geochemistry supports targets



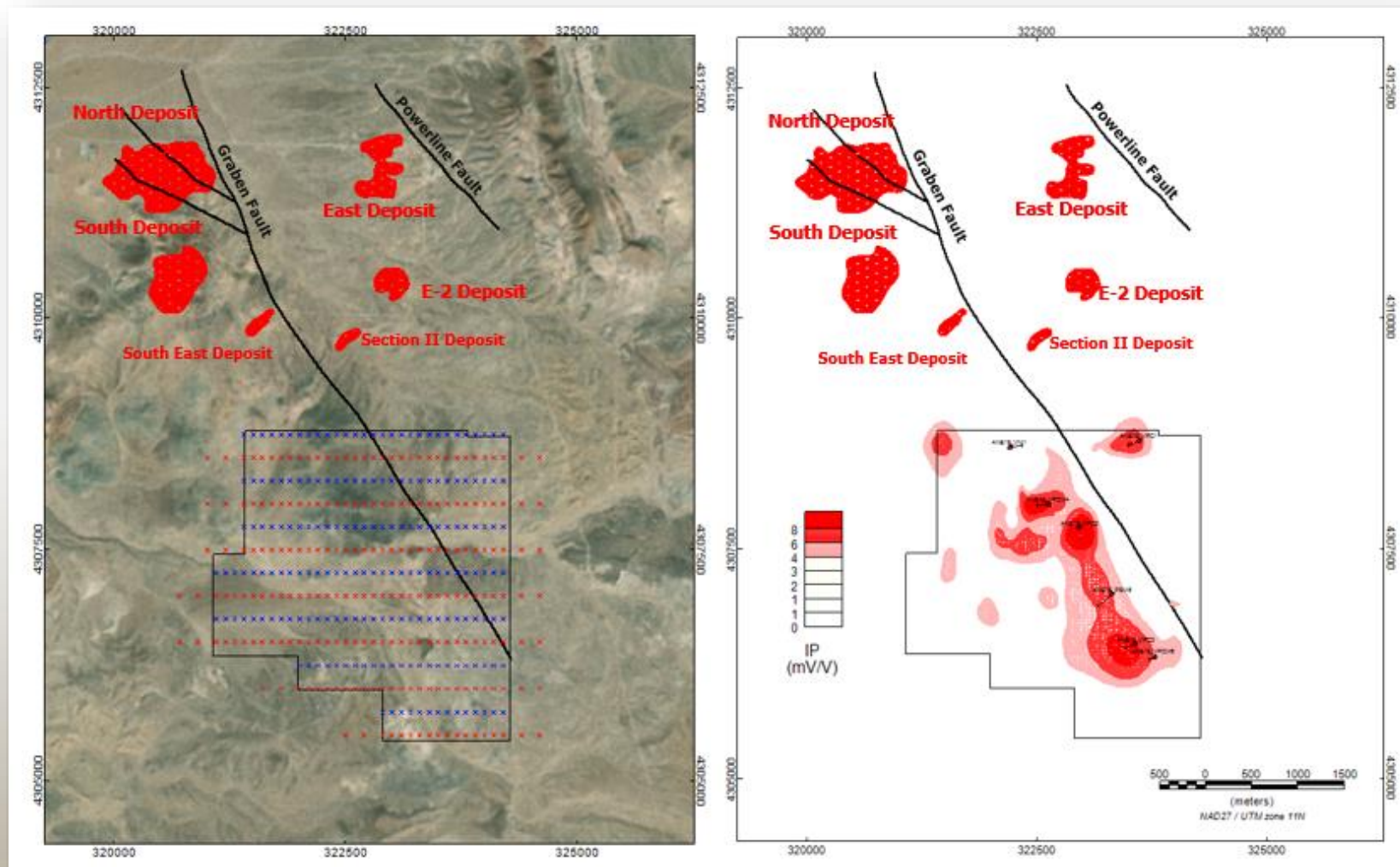
Copper Geochemistry

Gold Geochemistry

Silver Geochemistry

Evidence at surface of anomalous copper, silver and gold leakage along structures suggests that geological targets exist similar to the known mineralization at Pumpkin Hollow

Venus – 2018 3D IP/Resistivity Survey - Confirms Targets



Induced polarisation (IP) transmitter line locations in red and the receiver location shown blue

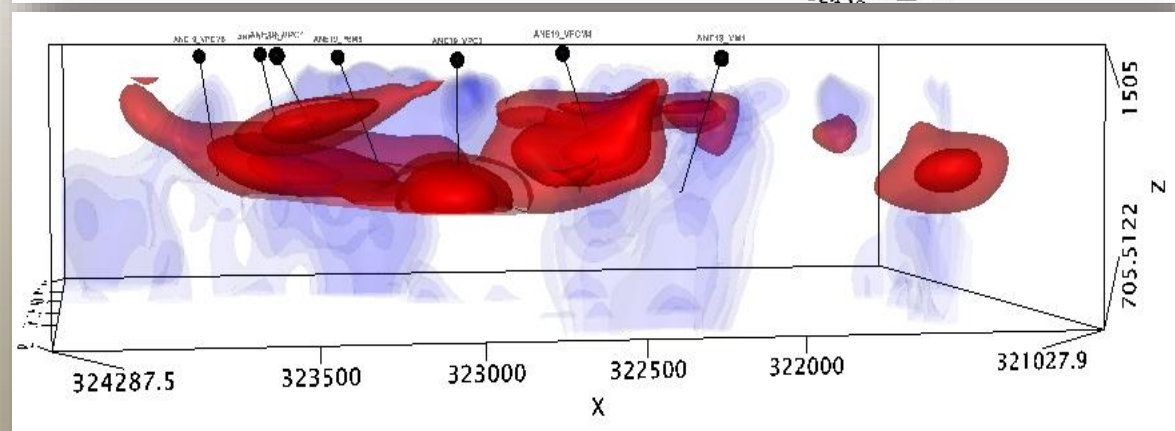
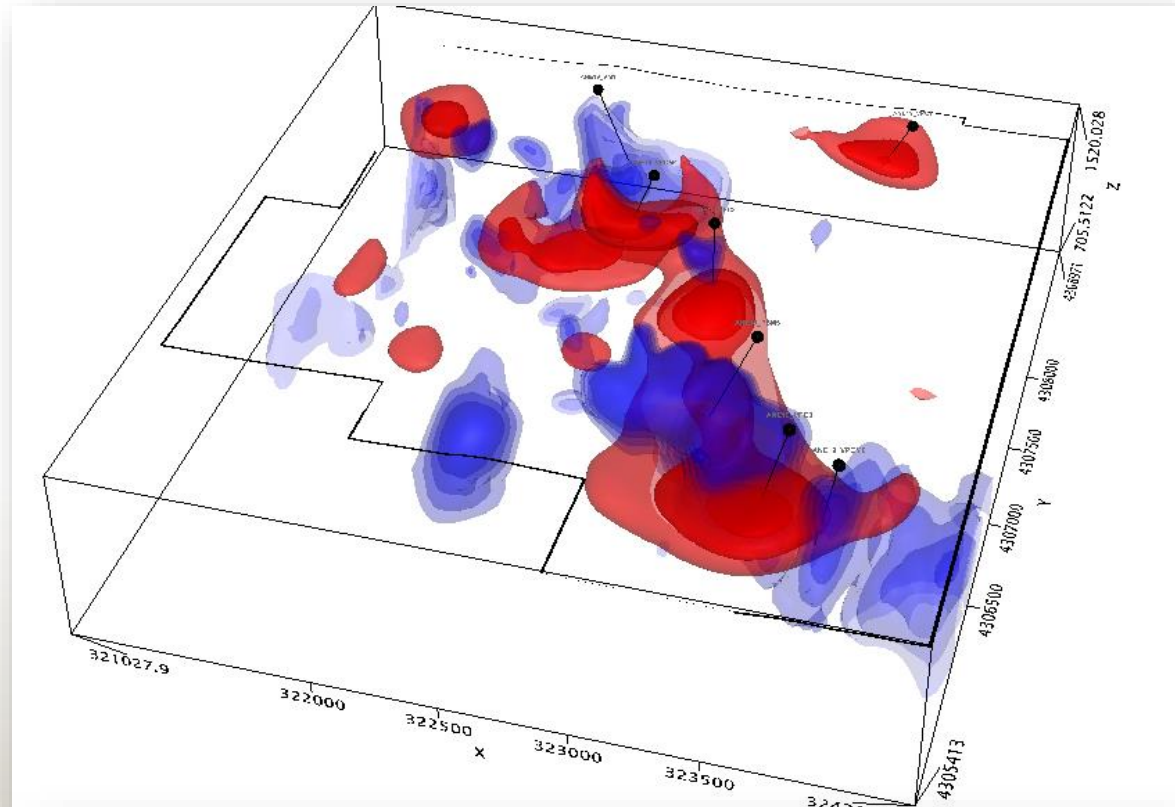
3D IP chargeability zones shown in red with proposed drill targets

Pumpkin Hollow deposits are high grade chalcopyrite-magnetite skarn

The 3D IP has directly identified zones which are interpreted to be associated with chalcopyrite

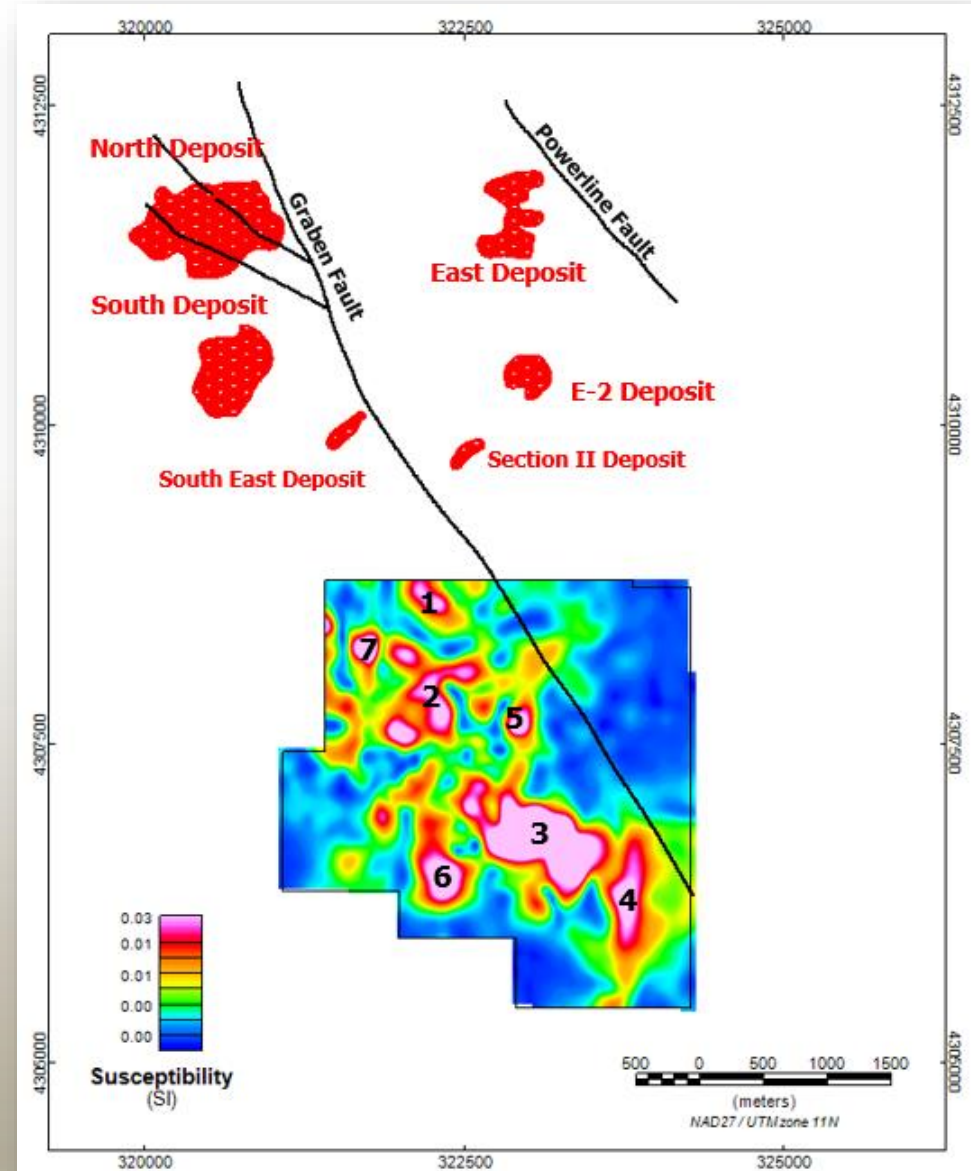
Venus – 3D IP and Magnetics – Drill Targeting

- 3D IP chargeability zones shown in red and magnetic susceptibility shown in blue with proposed drill targets Pumpkin Hollow deposits are high grade chalcopyrite-magnetite skarn. The 3D IP and magnetics has directly identified zones which are interpreted to be associated with chalcopyrite/ magnetite
- Altan Nevada conducted ground geophysical surveys including gravity, magnetics and 3DIP/resistivity the Venus project. The 2018 3DIP/ resistivity survey has successfully mapped down to 500m.
- The 3D IP has identified several chargeable zones which could be attributed to sulphide mineralisation. Some of the chargeable zones have coincident magnetic (magnetite) and geochemical responses (Cu, Au and Ag) and are considered high priority drill targets



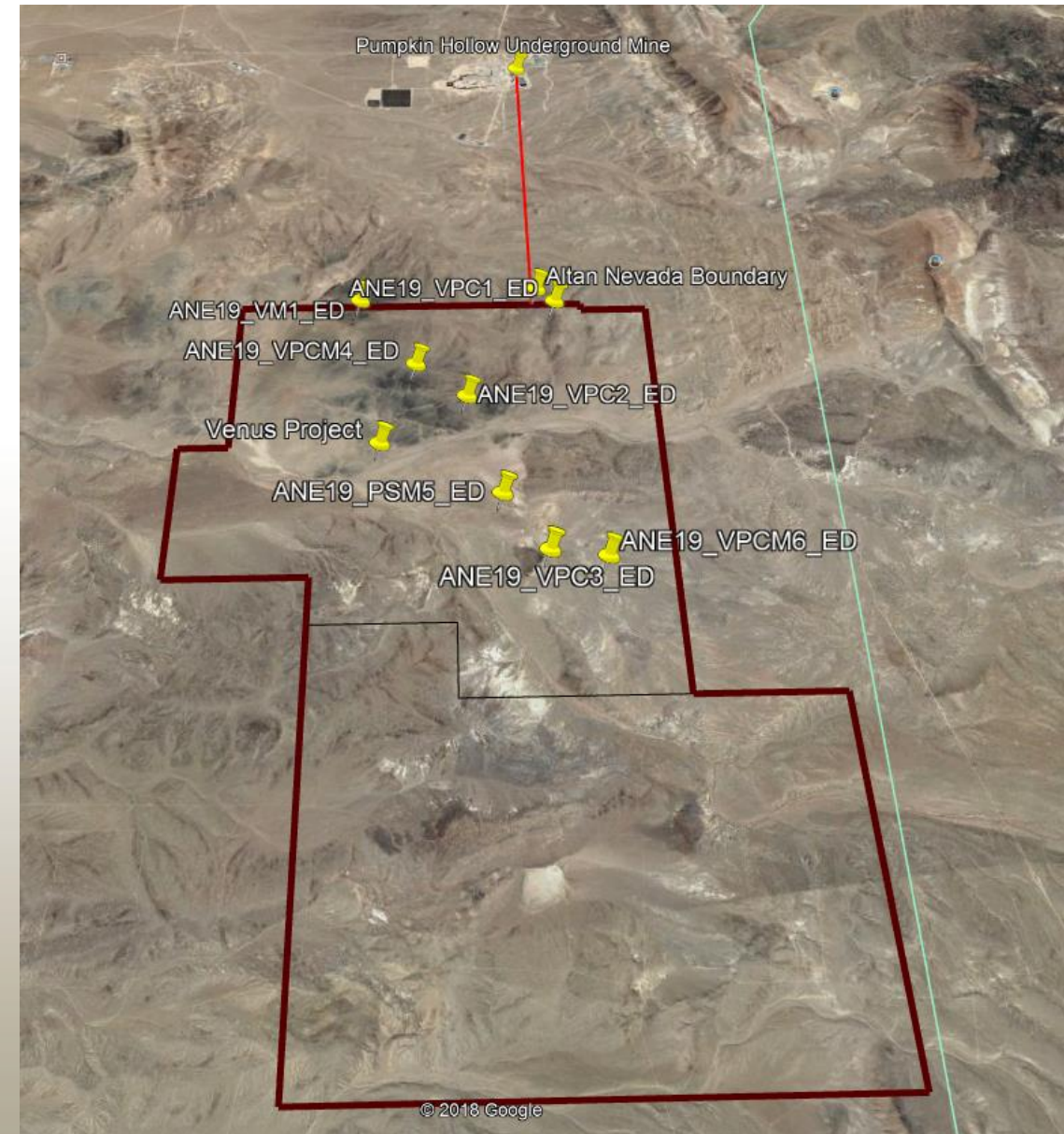
Venus Targets

- As the Pumpkin Hollow deposits are high grade IOCG chalcopyrite-magnetite skarn, magnetics and IP/resistivity have been useful in identifying the location of mineralisation under cover
- Geophysical surveys including gravity, magnetics and IP over part of the Venus project – Complete
- Ground magnetics has directly identified zones which have been interpreted to be associated with magnetite.
- 3D modelling suggests the depths to the top of these target areas are all less than 200m



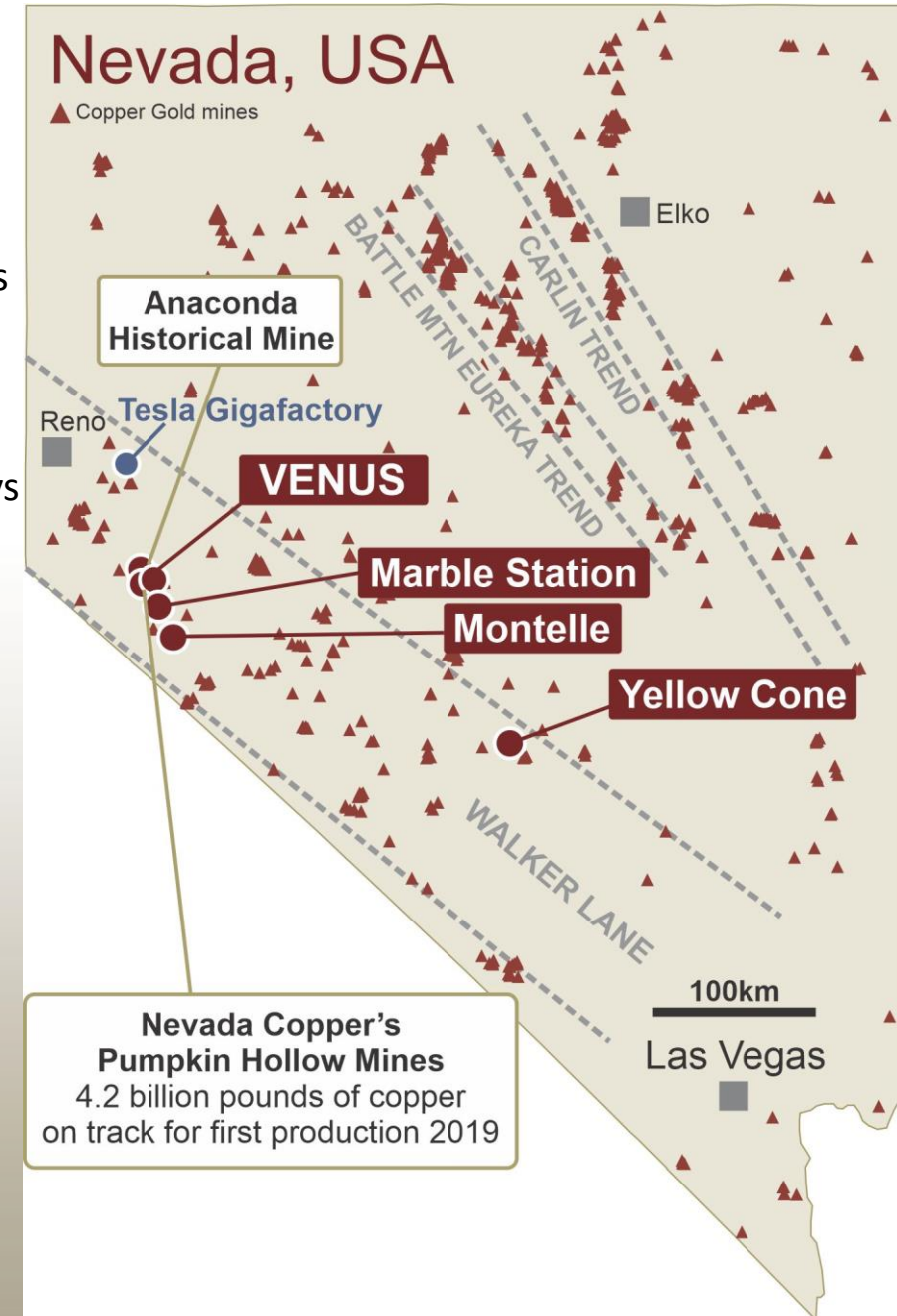
Venus – Exploration Plan

- Drilling permits complete.
- Earth Works / Water contractor engaged.
- Drilling Contractor tender complete.
- Strategic Land acquisition under assessment
- Approximately 2400m planned with permits pending.
- Total Costs inclusive of assays and support to end of drill program ~\$330,000.



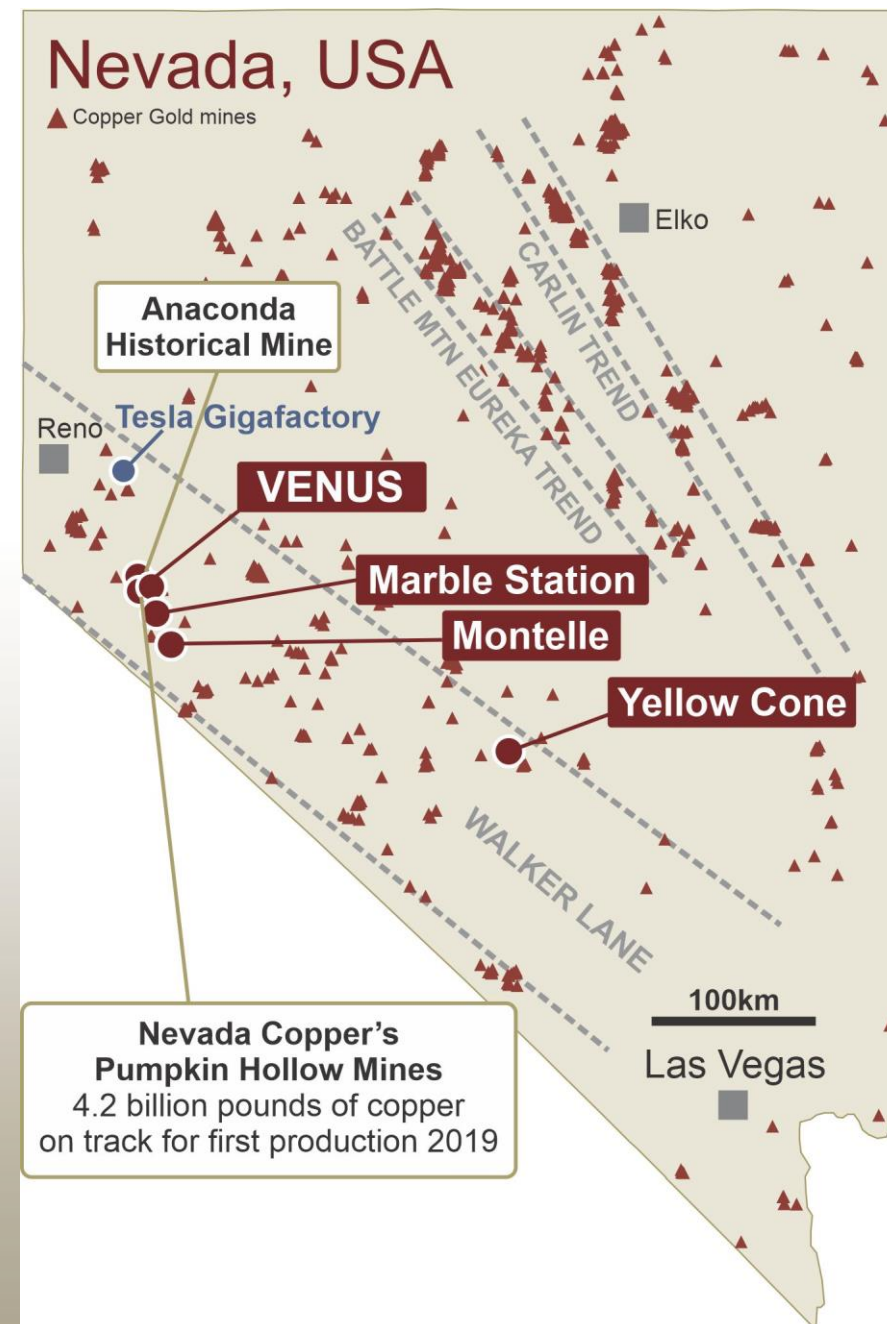
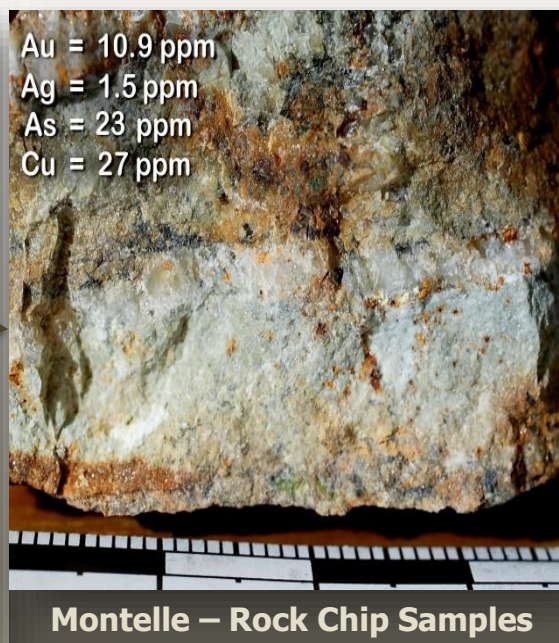
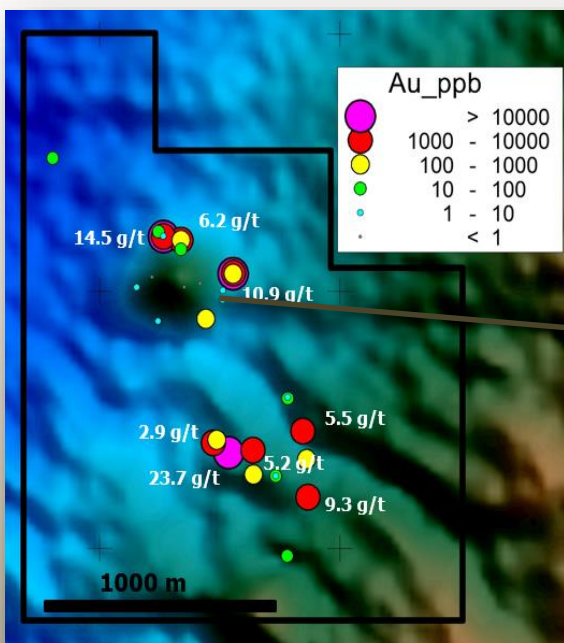
Exploration Innovator

- Altan Nevada is focused on the discovery of large-scale ore systems in one of the world's most prospective mineral regions **Nevada, USA**.
- Nevada has now produced over 170m oz of gold (1835-2018) and ranks as the world's third top mining jurisdiction Fraser Institute.
- The north west trending Walker Lane is one of the largest structural lineaments in Nevada and stands out with exceptional high grade assays for Gold Silver and Copper hosting multiple world class current mining operations.
- Altan Nevada holds 100% of 5 Projects on the Walker Lane Trend with primary targets in the **Yerington Copper District**. Altan is actively reviewing additional projects and available ground positions and intends to build on its existing tenure in the area.
- The Yerington district, hosts at least four porphyry copper deposits and several small Fe oxide-copper-gold lodes.
- Current district Inventory of more than 17billion Lbs. of copper in the Measured & Indicated categories.



Montelle Project

- Montelle Project -30 km South of Venus along the Walker lane.
- Yerington stage granodiorites with potential for high grade Au \pm Cu.
- Numerous old workings/ mine shafts with no known records on the activities.
- Montelle - high grade gold bearing quartz veins hosted in intrusive near numerous old mine shafts and workings. Soils and rock chips completed. Further mapping and then drill planning.

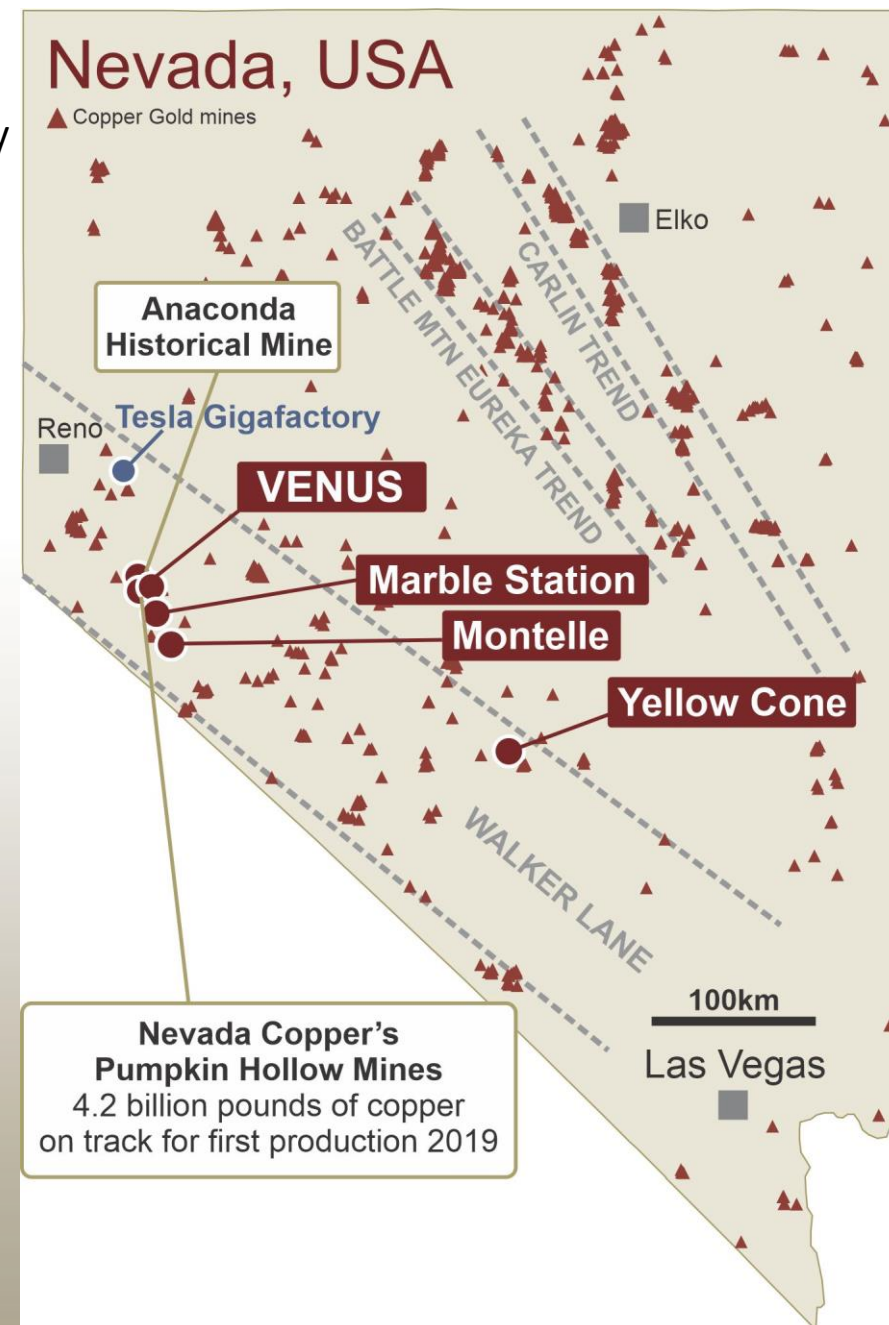


Marble Station

- Exploration Innovation applying modern exploration to historically prospective mineral tenure.
- Marble Station - 12 km South of Venus along the Walker lane
- Yerington stage granodiorites with potential for high grade Au \pm Cu.
- Numerous old workings with no known records on the activities.
- Rock grab, soil sampling and ground magnetic data completed

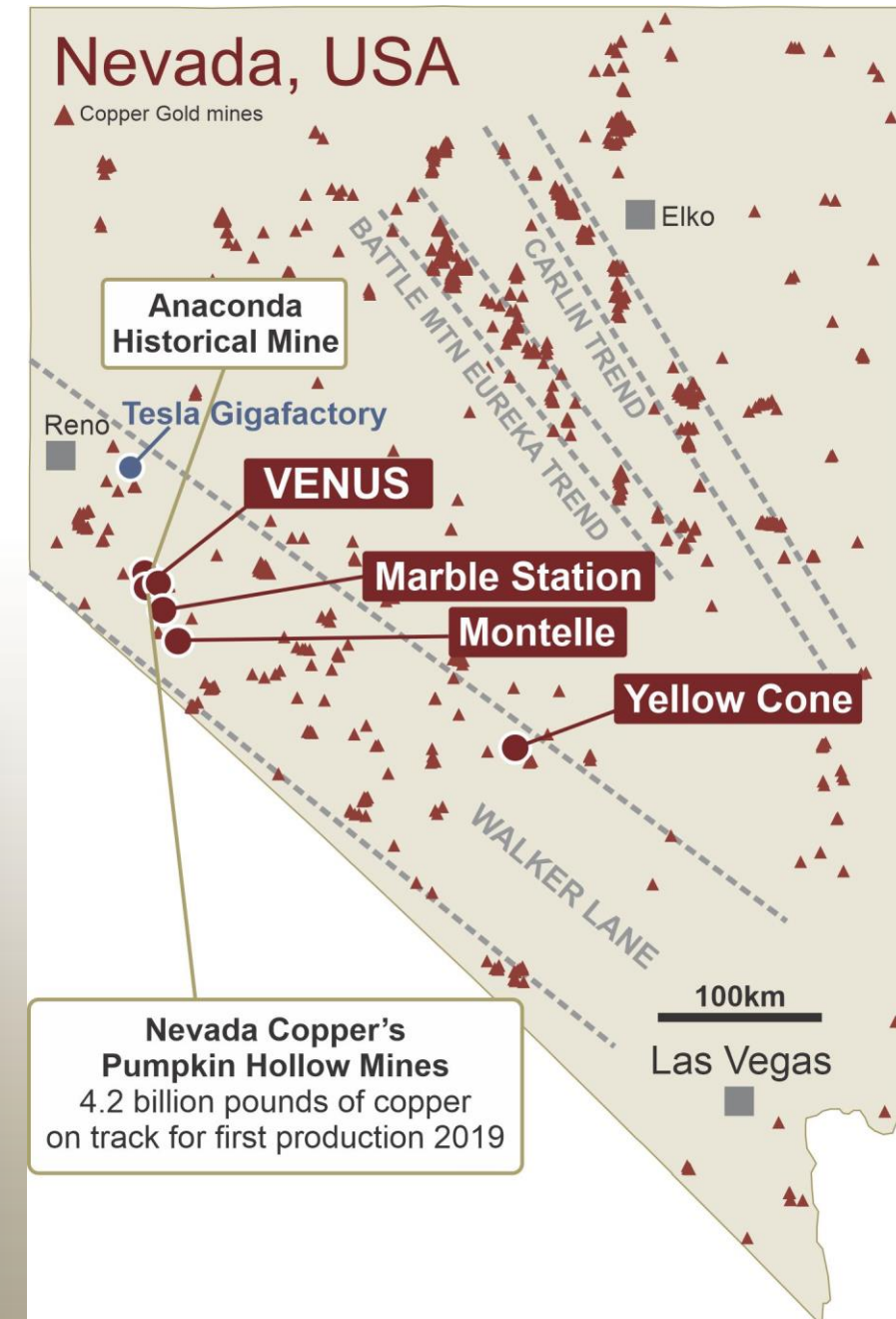
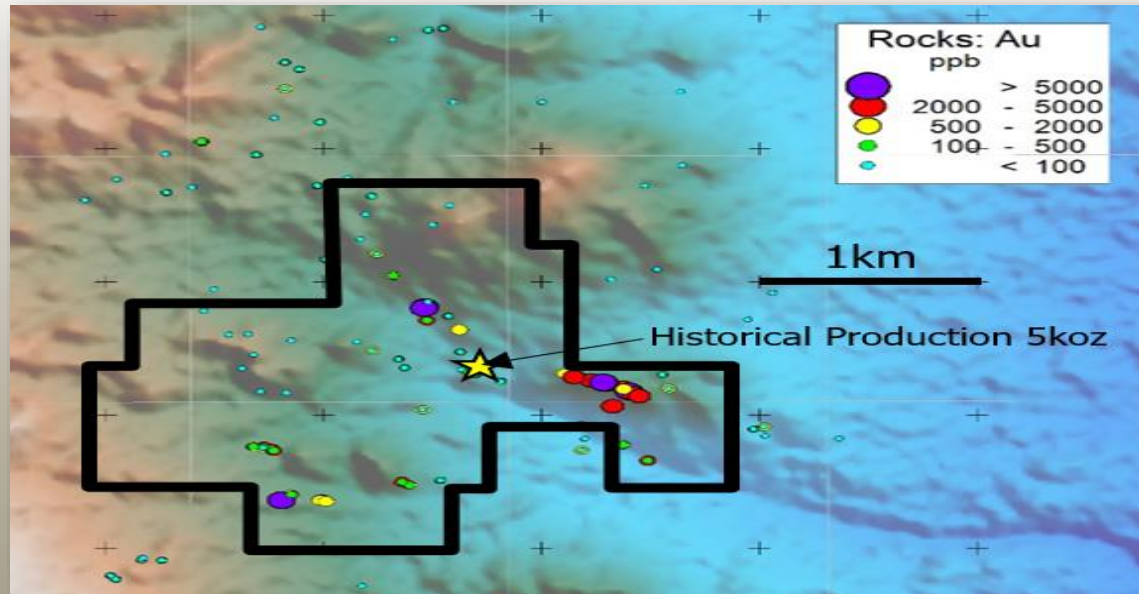


Shear zones contain 2 – 5 g/t gold



Yellow Cone – GOLD

- Large volcanic hosted copper-gold system identified through regional geophysics as a structurally controlled magnetic low astride a regional gravity high.
- An extensive quartz vein system was historically developed through a number of shafts producing several thousand ounces of gold in the early 20th century.
- Altan Nevada rock sampling has shown up to 26g/t Au, 880g/t Ag and +5% Cu.
- Mapping, soils, magnetics, ground geophysics has been completed. Altan Technical team looking to expand ground position.



Operating Team



John L.C. Jones AM - Chairman

A well known and respected mining identity, associated with a number of successful mining corporations in his 45 years of business. Mr. Jones has previously been Chairman of North Kalgoorlie Mines, Jones Mining and Troy Resources Limited. and Anglo Australian Resources. He has a strong prospecting instinct, clear strategic vision and a desire for exploration, mining and corporate success.



Paul Stephen – CEO

Mr. Stephen has a Bachelor of Commerce degree from the University of Western Australia and is a member of the Australian Institute of Company Directors. He has held directorships across both ASX and London publicly listed companies. As Co-founder and Executive Director of Crusader Resources Ltd he oversaw the discovery, development and operations of the Posse Iron Ore mine in Brazil generating positive cashflows deployed in exploration resulting in the discovery and delineation of over 2.6 million ounces of gold and the company being valued at over \$160M. Mr Stephen has extensive operational experience in mine site servicing and contracting and operations.



Barry Bourne - Technical Director

Previously based in Nevada exploring for porphyries and Carlin gold mineralisation as Chief Geophysicist for Barrick Gold. Barry has advanced global knowledge of targeting epithermal and porphyry style mineralization and is credited with exploration success at Casale (Au/Cu), Chile (Luciano Cluster), Kabanga (Ni), Tanzania (Ext), Tusker (Au), Tanzania (Kilimani Zone) and Ruby Hill (Au), USA (Bullwhacker Ext). Successfully delineated the Century (Zn/Pb) hydrological catchment area.



TSX.V: ANE

Paul Stephen

Chief Executive Officer

Email: ps@altnev.com

+61 08 9322 1788

+61 408 850 525

John L C Jones

Chairman

Email: jj@altanrio.com

+61 08 9322 1788

+61 418 624 929

Claudia Carmignani

Investor Relations

+61 08 9322 1788

WWW.ALTNEV.COM